

JULY 2020

Volume 35 Issue 7

Center United Methodist Church
PO Box 626
4th & Broadway,
Center CO 81125
Worship Services: 8:30 am
Church Phone: 719-754-2243
E-mail: umcofcenter@gmail.com
Financial E-mail:
CUMCfin@yahoo.com

Saguache United Methodist Church
6th & Christie, Saguache
Worship Service: 10:30 am

Pastor: Rev. Debbie Upton
Phone: 719-754-2243
Cell phone: 504-261-8860
167 W. 4th
Center CO 81125
Email: dupton@iliff.edu

Administrative Assistant/
Newsletter Editor:
Hannah Metzger
Office Hours: Mon—Fri
8:30am-11am

Pastor Debbie

Grace and Peace of Christ be with you,

June 28th The Relaunch happened with mixed feelings; however, it was the decision especially from those who attended to keep the church open with the restrictions. There were almost as many votes to continue the drive-in service until it is safer; however, the majority was to keep the church open. We will maintain the online and Zoom platforms for those who wish to attend virtually. For those attending in person, please invite all the people who visited during the drive-in services to come and join us in the sanctuary.

We are making plans for an outdoor drive-in movie night July 16th at 8 pm for the new Scooby-Doo. You may bring your lawn chairs if you wish not to stay in your cars. We are preparing special goody bags for the children who attend. The children have been through so much, so this special evening is designed as an outreach for them, so get the word out. Please invite everyone to this event. There are also plans for a possible virtual bible school in early August. We hope you will get involved and I would like to thank you in advance for your help.

I do appreciate every one of you who have been attending worship virtually or physically and thank those of you who so faithfully support our church. We will continue the online and text options as well as those who mail in their offerings or bring them to in-person services. I would like to thank Janet Myers and Sue McClure for their faithful service, especially during these uncertain times.

We have begun Disciple Bible Study Under the Tree of Life which an in-depth study and even if you have missed our 6:30 pm Zoom sessions on Wednesday, you are invited to join us as we continue this study. The previous sessions have been recorded, so if you decide to participate, I can send you the recorded sessions. If Wednesday evenings at 6:30 pm are not a good time for you, then you are still invited to do the study on your own with the recorded session.

On Wednesdays at 1 pm, I'm broadcasting on our Facebook Live – "The Story Behind the Songs," a 15 minute devotional about hymns and songs of our faith. Also on Facebook at 7:30 am each morning I am posting Morning prayers and at 6:30 pm each evening I am posting Evening prayers; both are 5-minute prayer sessions.

We are joining with the UMW to collect toiletries for the migrant workers: washcloths, combs or small brushes, bath soap, toothbrushes, toothpaste, shampoo, band-aids, fingernail clippers, and deodorant; so please drop off any items at the church during July and they will be delivered in August.

Whether you decide to come to worship virtually or physically, there is much work to do we can do together as we serve Christ. Remember to check out our website www.umcofcenter.com or our Facebook page or the Coop page www.slvumc.org.

May the Peace of the Lord be with you and keep you safe, Pastor Debbie

.....
*For I am convinced that
neither death nor life,
neither angels nor
demons, neither the
present nor the future, nor
any powers, neither height
nor depth, nor anything
else in all creation, will be
able to separate us from
the love of God that is in
Christ Jesus our Lord.*
Romans 8:38-39 (NIV)
.....



Senior Fitness Center

Our Gym is open! Please call the church office or text (504) 261-8860 before coming so we can ensure you safety.

We hope that we will be able to resume Yoga classes in July.

Thank you for your patience.

STATUS LEVELS OVERVIEW

RED STATUS

Stop all in-person worship and gatherings. Essential workers only are allowed in the church building(s). This is the "Stay in Love with God" time and stay-home phase of our ministry. Right now it is best to err on the side of caution, even as directives are eased from the various Mountain Sky Governors. Details related to the Red Status are provided at the end of this section. **As of this publishing, the Mountain Sky Conference is operating within the Red Status through May 31, 2020.**

YELLOW STATUS ★

Cautionary Return. It is anticipated this will cover a number of months. As the MSC, we want to "Do Good" as restrictions are lifted. This may mean a gradual return to gatherings, depending on the circumstances. Yellow Status begins when state and local officials have reported a 14-day downward trend of cases, hospitals are treating patients without crisis care, and there is a robust testing program in place, including antibody testing.

GREEN STATUS

In-person gatherings are the "Do No Harm" phase that can be initiated when the virus is contained. Permission will be granted to communities of faith to return to full activity and in-person gatherings. This will be in place only as church leadership is confident in the care of their community of faith. Green status for all activities will likely be dependent on a testing protocol for asymptomatic COVID-19 carriers, antibody testing, therapeutic drug therapies, aggressively caring for those who have contracted COVID-19, and approval and availability of a COVID-19 vaccine. State and local officials must have successfully met the criteria of Yellow Status, and there must be evidence through case reporting, testing, and community monitoring that there is no evidence of a rebound.

The Mountain Sky Conference of The United Methodist Church recognizes returning to full participation will be based on the oversight of the Bishop, Crisis Response Team, state, and national guidelines, as well as the seasonal movement of the virus.

Sweet Restaurant Coleslaw

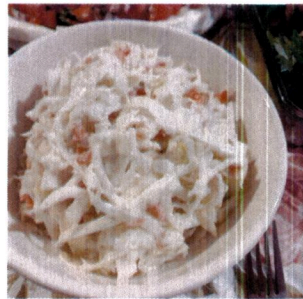
Ingredients

Recipe by: Sandi Gregory Johnson

- ◆ 1 bag of coleslaw mix
- ◆ 2 Tbsps diced onion
- ◆ 2/3 C Miracle Whip
- ◆ 3 Tbsps vegetable oil
- ◆ 1/2 C sugar
- ◆ 1 Tbsp white vinegar
- ◆ 1/4 Tsp salt
- ◆ 1/2 Tsp poppy seeds

Directions

1. Combine the coleslaw mix and onion in a large bowl.
2. Whisk together the Miracle Whip, vegetable oil, sugar, vinegar, salt, and poppy seeds in a medium bowl; blend thoroughly.
3. Pour dressing mixture over coleslaw mix and toss to coat.



Allrecipes.com

*Chill at least 2 hours before serving

THE LORD
HIMSELF GOES
BEFORE YOU
& WILL BE
WITH YOU; HE
WILL NEVER LEAVE
YOU NOR
FORSAKE YOU.
DO NOT BE AFRAID;
DO NOT BE
DISCOURAGED.
DEUTERONOMY 31:8

COVID-19

GUIDANCE FOR PLACES OF WORSHIP

The safest option to protect the most people and prevent the spread of the virus is to offer services online during this phase of the pandemic.

We strongly recommended that those who are at higher-risk of severe illness from COVID-19 (e.g. 65 years and older, chronic lung disease, serious heart conditions, immunocompromised, severe obesity, diabetes, liver disease, chronic kidney disease undergoing dialysis, etc.) continue using online options. Because spiritual needs cannot always be met through online programming, some spiritual leaders may decide to manage the risk and re-open portions of their in-person services. These guidelines and recommendations will help protect the health of those who choose to attend religious and spiritual gatherings in-person during this time. These guidelines and recommendations apply to houses of worship and settings where life-rites occur, such as funeral homes or venues for wedding ceremonies. Social reception for those events still must follow mass gathering limitations.

Required guidelines

Capacity limitations

- Indoors: Maximum 50% capacity or up to 50 people per room.
- Outdoors: Groups from different households spaced at least 6 feet apart, up to local capacity levels.

Physical/social distancing

- Entering and exiting buildings should include at least 6 feet physical distancing. A “party” includes members of a household who live together.
- Seating in houses of worship should be arranged in such a way as to maintain at 6 feet of distance in *every direction* between individuals or parties.
- Faith communities are encouraged to add additional services to accommodate the need for physical distancing, as well as consider shortening the duration of services to minimize exposure time.
- Houses of worship should have a plan for distancing requirements in restrooms (either one person at a time or close off multiple stalls in between the stalls that can be used).
- Multiple large rooms in a facility can be used as long as each space can follow ALL the guidelines and each room has 4 walls and a door. Service times may have to be staggered to accomplish this. Leaders must attend to distancing requirements, available restrooms, separate entrance/exit doors, and timely cleaning practices.

Cleaning practices

- Follow the [Colorado Department of Health and Environment's Cleaning Guidance](#).
- Restroom should be cleaned at minimum between each service.
- Any metal or plastic on chairs or surfaces must be disinfected between services.

- Additional resources can be found at [CDC Coronavirus Disease 2019 \(COVID-19\) – Get Your Community – an – Faith – Based Organization Ready for Coronavirus Disease 2019.](#)

Strongly recommended guidelines

Masks

- Follow the [Colorado Department of Public Health and Environment's Guidance for wearing masks/cloth face coverings.](#)
- We strongly encourage that masks be worn at all times while on the premises by staff, volunteers, and congregants attending worship services. Children 2 and under, those with trouble breathing, or those unable to remove a mask without assistance should not wear a mask.
- Houses of worship should have extra masks on hand for visitors who do not have their own. Any item provided to be worn must be disposable or fully sanitized before and after each use.

Pre-registration

- Use a pre-registration system, social media platform, or private messaging to distribute the number of worshippers across the services being offered (in accordance with the physical distancing guidelines).
- Develop [a protocol for symptom screening](#): self-reporting, health surveys, or on-site checks. Anyone with any symptoms may not attend.
- Consider allowing for 10% capacity at each service for "walk-ups" who do not have access to technology to sign up or do not know how to use it.
- Consider who will manage additional participants at the door.

Congregations, employees and volunteers

- Upon arrival, all employees and volunteers should have their temperature taken and symptoms screened. Anyone with a temperature over 100.4 or showing COVID-19 symptoms should go home. [Sample Screening Form.](#)
- Masks and gloves must be worn.
- Training should be provided on sanitation. If anyone has symptoms, [follow workplace outbreak guidelines.](#)

Directing movement of people (entry/exit Doors)

- Employees or volunteers (ushers) should provide physical distance directions for where to walk and which area are available for seating/standing as the service begins and ends.
- Display clear signage in languages worshippers understand.
- Attendees should enter and exit the facility as directed: one person/household party at a time adhering to physical distancing guidelines.
- Mark the floor, pews, and walls of the worship space (aisles), the lobby, and the area outside the entrance and exit with physical distancing markers to cue people where to stand/wait.
- Avoid any close congregating or crowding before, during, or after the service.
- Use separate doors for entry and exit. If only one door is available, ensure times of services are spread out enough that the exit of one service can be completed before entry for the next services are spread out enough that the exit of one service can be completed before entry for the next service is allowed.
- People should be dismissed separately to avoid contact.
- After services, people should return directly to vehicles, maintaining at least 6 feet of distance from others.
- Throughout the service, people need to maintain at least 6 feet distance from all persons not in their household/party.
- People should be dismissed separately to avoid contact.

- After services, people should return directly to vehicles, maintaining at least 6 feet of distance from others.

Create a “touchless” experience

Where possible, houses of worship are encouraged to create a plan which allows for worshippers to avoid all contact with surfaces.

- **Doors:** Doors entering the building and inside the building should either remain propped open or be opened/closed by employees/volunteers throughout the entire process.
- **Hand sanitizer:** Locate touchless hand-sanitizer units at the front door and throughout the facility.
- **Greeters:** Greeters and attendees must greet while maintaining a least 6 feet of distance at all times and refrain from shaking hands or any personal contact.
- **Designated standing room:** Where possible, some paces can be designated for those who desire to stand during the service with proper physical distancing (so as not to touch the chairs).
- **Communion:** Direct interaction between faith leaders and congregants should touch-free. Individually packaged communion is the safest option. When communion is not individually wrapped, the container for the host/bread should remain covered and uncontaminated during blessings and prayers. Distribution should be touch-free. Common cups are very high-risk and should not be used.
- **Offering:** Offering boxes or baskets should be attached to the wall or set at an entrance or exit of the worship space in a way that attendees do not have to touch it when they give. Do not pass baskets or plates among attendees.
- **Hymnals/religious books:** These items should be removed and photocopies should be made available that can be discarded after one individual use, if permissible in that faith tradition. Consider projecting materials on a wall/screen for congregations to read together. Best practice is for worshippers to bring their own religious books and /or use technology to project lyrics, scriptures, liturgies, etc., so no physical copies are necessary, or provide links that can be used to get to the materials on a cell phone.
- **Contact with religious objects:** At this phase of re-opening, there should be minimal communal contact with objects or religious or spiritual significance. If possible, consider wearing gloves or other protection while handling.
- **Food and beverage:** No food or beverage may be offered by the house of worship. No food or beverage may be brought in by individual attendees to share with others.

Presenting speakers/singers/choirs/instruments

- N95 masks or personal face coverings/shields should be worn to the greatest extent possible, as loud speaking and singing appear to spread COVID -19 further.
- Speakers, preachers, presenters, and singers should move considerably further back (25-50 feet) than the prescribed 6 feet of physical distance to maximize distance between them and the front row attendees. Separation by Plexiglas or glass divider an option when distancing is not possible
- Choirs should not be used at this time given the strong risk of viral spread from singing.
- Pipe organs and wind or any instrument requiring breath should be avoided unless behind shielded protection.

Children’s and youth programming

- Children and youth may attend religious services with parent(s)/caregiver(s) who feel confident they can enforce at least 6 feet of distance between children from different households.
- Particular services should be catered to families and publicized accordingly in order to mitigate the risk of cross-generational transmission.
- Houses of worship that would like to provide programming for children must demonstrate in ability to adhere to all [guidelines for child care centers](#) published by CDPHE. Youth programming, separate from the religious services, may occur but with a strong recommendation for meeting outdoors, providing at least 6 feet of distance between parties from all sides, and the use of mask by **all** participants.

Other areas of recommendation/consideration

Outdoor services

- These services are allowed if all applicable guidelines listed in this document can be followed. Special consideration must be given to directing people from the parking lots to the outdoor setting while physical distancing, as well as indicating where they can sit/stand.
- Guests should bring their own lawn chair/blanket to minimize the shared use of chairs and other items (umbrellas, etc.).
- Mask and at least 6 feet of distance between parties is still required.
- Weddings that can follow outdoor service guidelines are allowed.
- Drive-In services are allowed if the [COVID-19 Drive-in Service Guidelines](#).

Security

- Unfortunately, hate groups have used the fear of the pandemic to promote discrimination - - particularly against Asian, Jewish and Muslim communities. Any plans for reopening should be made with an awareness of these type of events.

Muslim ablution

- Where possible it is recommended ablution occur privately at the attendees' place of residence before arriving at the mosque. If that is not possible, staff or volunteers should clean faucet handles and other items between each use.

Religious studies, small groups, and meetings

- Religious studies, book studies, and other small groups are strongly encouraged to continue to meet online.
- Staff might consider limited meetings in the religious facility with appropriate physical distancing and masks. Where possible these groups are encouraged to meet outdoors and to follow proper physical distancing guidelines and the use of masks.
- Religious facilities should follow the cleaning, movement, and mask guidance above.

Food pantries and other services

- These activities may occur at the religious facility assuming all the relevant guidelines listed in this document can be followed and additional CDPHE guidelines for specific service facilities are followed. When distributing items, the gatherings should remain at 10 or under in one room with physical distancing guidelines, masks, and cleaning.

Other sacred ceremonies

As with all other services offered, if all the above guidelines can be met, these events are permitted.

Additional Comments

- Please note, these are recommendations for June and July, Based on current data.
- Houses of worship should immediately refer to the [health department's guidance](#) for their county if there is deemed to be an outbreak in their community.
- Consider these recommendations as ways to protect your community and the general public. Do not try to find loopholes in order to bypass the recommendations. Be sure to check with your insurance company about liability around COVID-19 exposure in your facility.
- Areas that request and receive a variance from CDPHE can abide by the guidelines in the approved variance application.